



## Introducing the High Efficiency ECM by QM Power: **QEC 6-12W (50/60 Hz) Electronically Commutated Motor**

**Ground-breaking technology  
that returns money to your  
bottom line.**

- QEC ECM motors save up to **\$105 per year** per motor in energy costs
- Realize **immediate savings** when you replace competitor motors with a QEC motor
- Gain increased reliability and peace of mind with **2X the warranty** and up to **2X the expected life of other motors**

### QEC Advantages

- ✓ Water resistant housing for carefree cleaning (IP65 Certified)
- ✓ Engineered with Heavy Duty Components for Extended Life
- ✓ Less heat generated reduces the load on the refrigeration system
- ✓ Quieter motors enhance customer experience

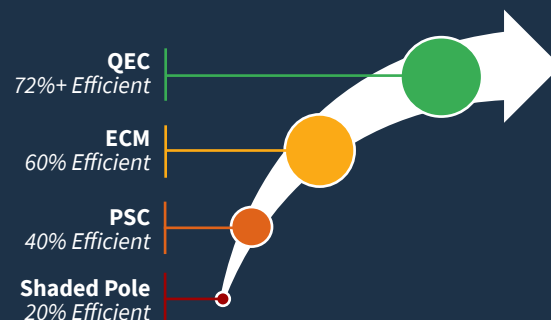
### Save More

QEC motors reduce your energy cost.

#### Annual Energy Cost Savings per Motor from using QEC Electronically Commutated Motors

| Energy Costs | QEC vs. Shaded Pole | QEC vs. PSC |
|--------------|---------------------|-------------|
| \$0.20 / kWh | \$104.62            | \$32.57     |
| \$0.15 / kWh | \$78.46             | \$24.43     |
| \$0.10 / kWh | \$52.31             | \$16.29     |

#### Comparison of 12W Motor Efficiencies



IP65  
CERTIFIED

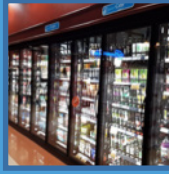
cUL<sup>®</sup> US

CE

# QEC Refrigeration Fan Motor Applications

## 6-12W fan motors for:

- Reach-In Coolers
- Display Cases
- Refrigerated Prep Tables
- Upright and Under Counter Refrigeration
- Small Walk-In Coolers or Freezers
- Ice Machines, Vending Machines, and other refrigeration applications



Reach-In-Coolers



Refrigerated Prep Tables



Display Cases



Under Counter Refrigeration

## QEC Product Features

### More Energy Efficient

- ✓ 70-75% fewer watts consumed compared to shaded-pole motors
- ✓ 20-35% fewer watts consumed compared to ECM motors
- ✓ Less heat generated by the motor, reducing thermal stress on the refrigeration system

### Longer Life and Higher Reliability

- ✓ Engineered to with heavy-duty capacitors and resistors to overcome common failure points in other motors
- ✓ IP65 Certified (water and dust resistant)
- ✓ Built with high performance, extended life bearings
- ✓ Design life is 2-3 times longer than most other motors

### Easier to Install

- ✓ Drop-in replacement - universal motor and basket mounts make installation up to 4X faster!
- ✓ A cord with straight Lyall plug is standard
- ✓ Dual voltage 115V/230 V
- ✓ Dual frequency 50/60 Hz



IP65  
CERTIFIED

c **UL** <sup>®</sup> **US**

**CE**

